



RENAISSANCE PLANNING LIMITED

COMPANY

PROFILE

Our Services

- Spatial planning
- Change of user and land sub-division/amalgamation
- Undertaking socio-economic survey
- Comprehensive site planning/master planning
- Digital Topographical Mapping and Survey
- Geographic Information System
- Environmental Management;
 - (a) Environmental and Social Impact Assessment(ESIA)
 - (b) Strategic Environmental Assessment (SEA)
 - (c) Environmental Impact Assessment (EIA) and Environmental Audit (EA)
- Preparation of Land Information System (LIS)
- Preparation of Resettlement Action Plan (RAP)
- Baseline Survey, Research and Feasibility Studies
- Project Planning, Monitoring and Evaluation



KTDA Plaza, 7th Floor
Moi Avenue



+254 722 333 967
+254 727 275 123



Box 2315 - 00200, Nairobi Kenya
replanningltd@gmail.com

OUR PROFILE

I'm a spatial planner, an environmentalist and a community development expert leading a team of experienced professionals in diverse disciplines. As the executive director at Renaissance Planning limited, I mobilize and coordinate a team of experts across various sectors and inspire transformation of communities. My work ranges from scholarly research bridging numerous disciplines including spatial planning, surveying, digital topographical mapping, GIS, urban design, community development and environmental management.

I lead pioneering effort to understand how spatial-based design informs civic engagement objectives such as stakeholders participation and stewardship during projects execution. Our in-depth and comprehensive physical, social and economic data collection, analysis and synthesis provides a solid base against which the desired and effective designs are premised upon.

P. MUTUMAMBUI

MA - Spatial planning, Certs - Project Planning and Management, Environmental Impact Assessment and FKIP

**Executive Director,
Renaissance Planning Limited**



INTRODUCTION

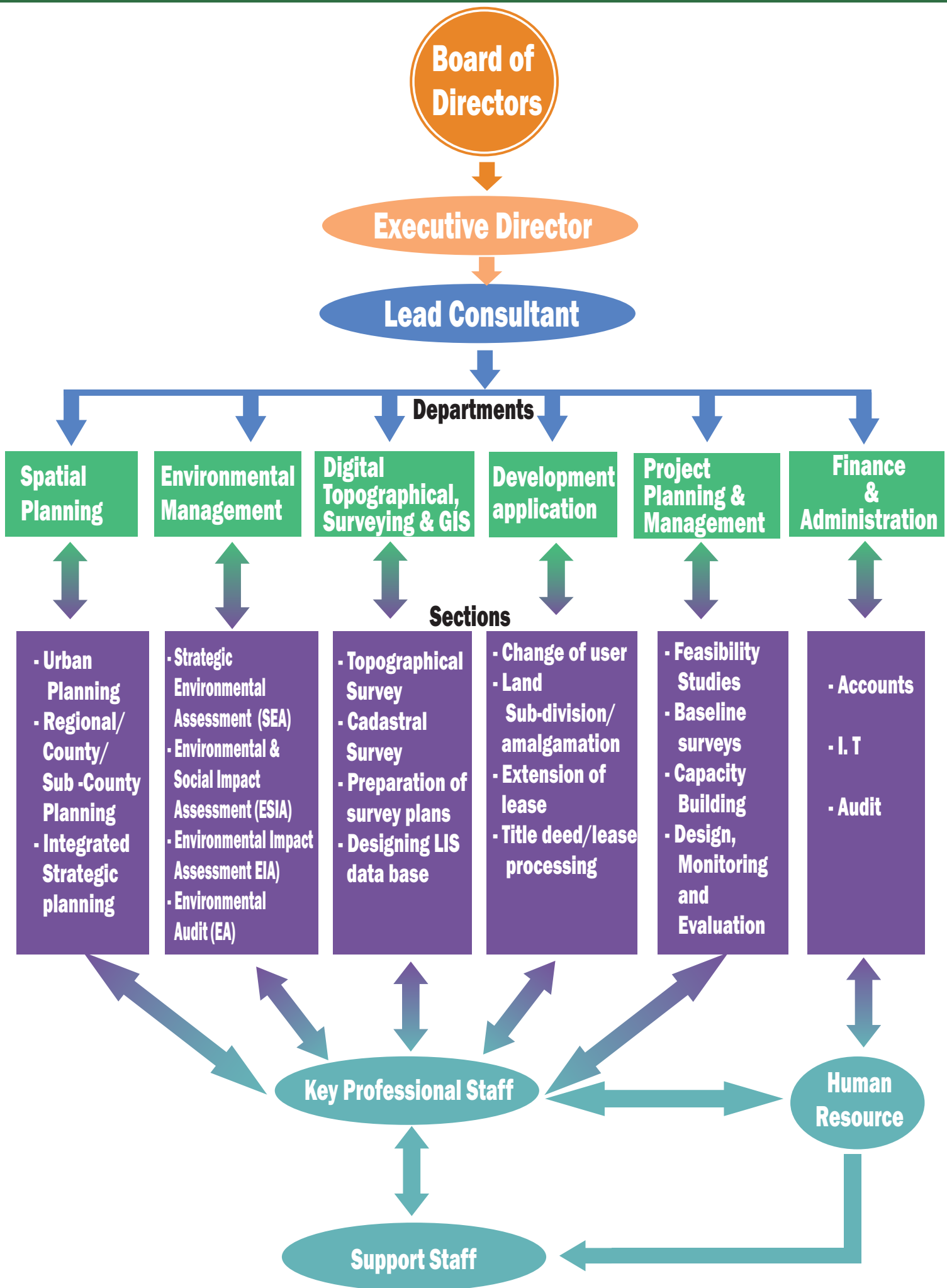
Renaissance Planning Limited is a professional consulting firm specializing in all aspects of Community Development and Spatial Planning, Surveying, Urban Design and Environmental & Social Impact Assessment, preparation of Land Information Systems (LIS) and Resettlement Action Plans (RAPs). Our commitment is to provide unparalleled support, responsiveness and creativity to our clients' planning, design and development related concerns. Our firm is built on a foundation of excellence in customer service, strong professional relationships and a commitment to creativity and innovation.

With our fresh approach to planning and design and environmental management, our familiarity with contemporary development practices, and our ability to conduct engaging community outreach, we provide a uniquely effective and vital resource to our clients. All our assignments incorporate a highly illustrative and graphically compelling approach to communicating planning and development concepts. Our firm specializes in projects that are visionary and viable - pushing the creative envelope while being rounded in market and economic realities.

The firm has a pool of diverse experienced expertise with a strong countrywide network. It is composed of technical personnel with advanced knowledge consisting of Physical Planners, Land Surveyors, Environmentalists, GIS experts, Landscape Architects and Designers, Economists, Sociologists, Engineers, Valuers and Infrastructure Experts.



Company's Organizational Chart



OUR VISION

To become a Regional and Global leading organization in the provision of exemplary services.

Our MISSION

To provide efficient technical consultancy services in public and private sectors

Management objective

To create new values through pragmatic management techniques

Our CORE VALUES

Quality

At Renaissance Planning Ltd, dedication to excellence is our prime mission. We are committed to providing the highest degree of quality in our products, solution, service, and endeavor of our company. This results in loyal clients, who highly recommend others to engage our services.

Professionalism

We are one company, one team. We believe that succeeding as one enterprise is as important as succeeding independently.

Balancing empowerment and interdependence makes us strong. We work together and build relationships to create an even greater value for the clients we serve.

Teamwork

All team members are encouraged to openly share their opinions and views. We are flexible and assist our team members to strike a healthy work and life balance.

Respect

We treat our team members, clients, consultants, and service providers with mutual respect and sensitivity, recognizing the importance of diversity. We respect all individuals and value their contributions.

Integrity

We act with honesty and integrity, never compromising on the truth. We communicate openly and our actions are consistent with our words.

Accountability

We accept our individual and team responsibilities and we meet our commitments. We take responsibility for our performance in all of our decisions and actions

WHO we are

Renaissance Planning limited is a professional consulting firm specializing in spatial planning; surveying and mapping; and environmental management. Our experienced experts offer a platform of different disciplines and are committed to developing creative solutions that ensure compatibility between the existing and emerging built and natural environments

- 🔄 Physical/spatial planning
- 🔄 Surveying, mapping and Geographic Information
- 🔄 Strategic Environmental Assessment (SEA), Environmental and Social Impact Assessment (ESIA), Environmental Impact Assessment (EIA) and Environmental Audit
- 🔄 Development applications
- 🔄 Land Information System
- 🔄 Relocation/Resettlement Action Plans

Physical /Spatial Planners

Land Surveyors

GIS Experts

Environmentalists

Sociologists

Infrastructure Experts

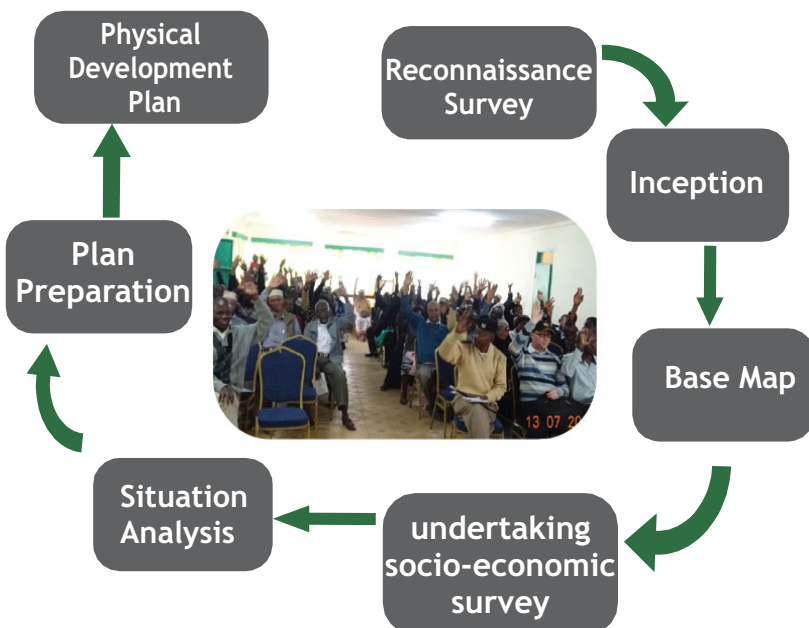
Economists

WHAT we do

Renaissance Planning ltd offers consultancy services in Spatial planning; surveying and mapping; and environmental management among others to both the public and private sectors.

HOW we do it

We help our clients to identify and analyse the Strength Weakness Opportunity and Threats (SWOT) within their areas, establish the vision and formulate prerequisite proposals to enable them reach the desired future end-state. To actualize this, we undertake comprehensive data collection to aid in problem identification and analysis in the respective planning areas. This helps in guiding the stakeholders in making informed decisions through creating awareness and visioning.



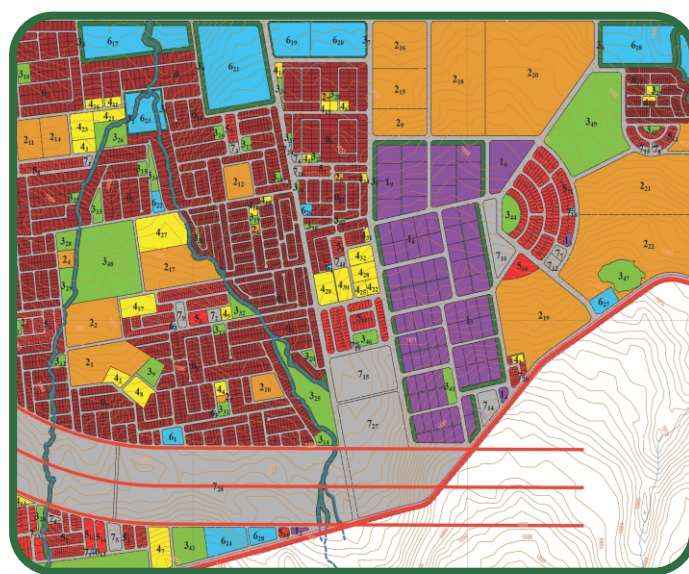
OUR SERVICES

1. Spatial Planning

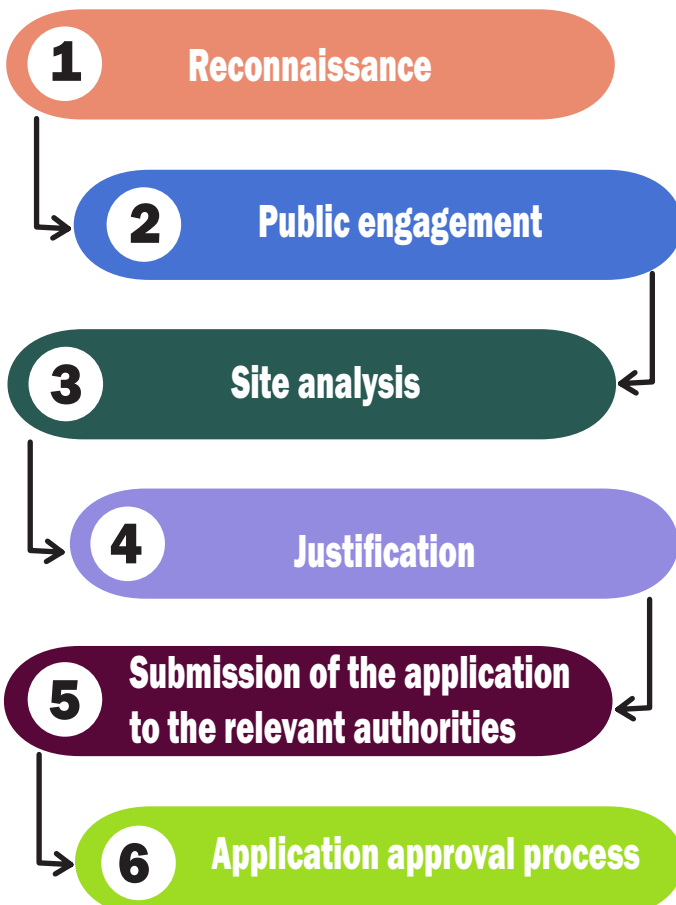
Spatial planning involves the organization of various land uses and their distribution for human activities and settlements. The firm's Spatial Planning department specializes in provision of physical planning services that seek to achieve optimal land use, while ensuring the availability of infrastructure and services with the appropriate framework to encourage and support service providers and investors. The spatial planning is also aimed at ensuring harmonious development.

This department has the necessary technical skills and capacity to provide consultancy services throughout Kenya in the preparation of: Integrated Strategic Urban Plans, County Spatial Plans, Master plans/site plans, development applications, land subdivision schemes, County Integrated Development Plans and sectoral plans.

A Comprehensive Plan serves as a community's guide for land use, growth, physical improvement and development. It provides a foundation for decision-making and sets forth a framework for achieving community goals and objectives. To be effective, a comprehensive plan should thus be based on community consensus, community vision, and an understanding of existing conditions and future potentials



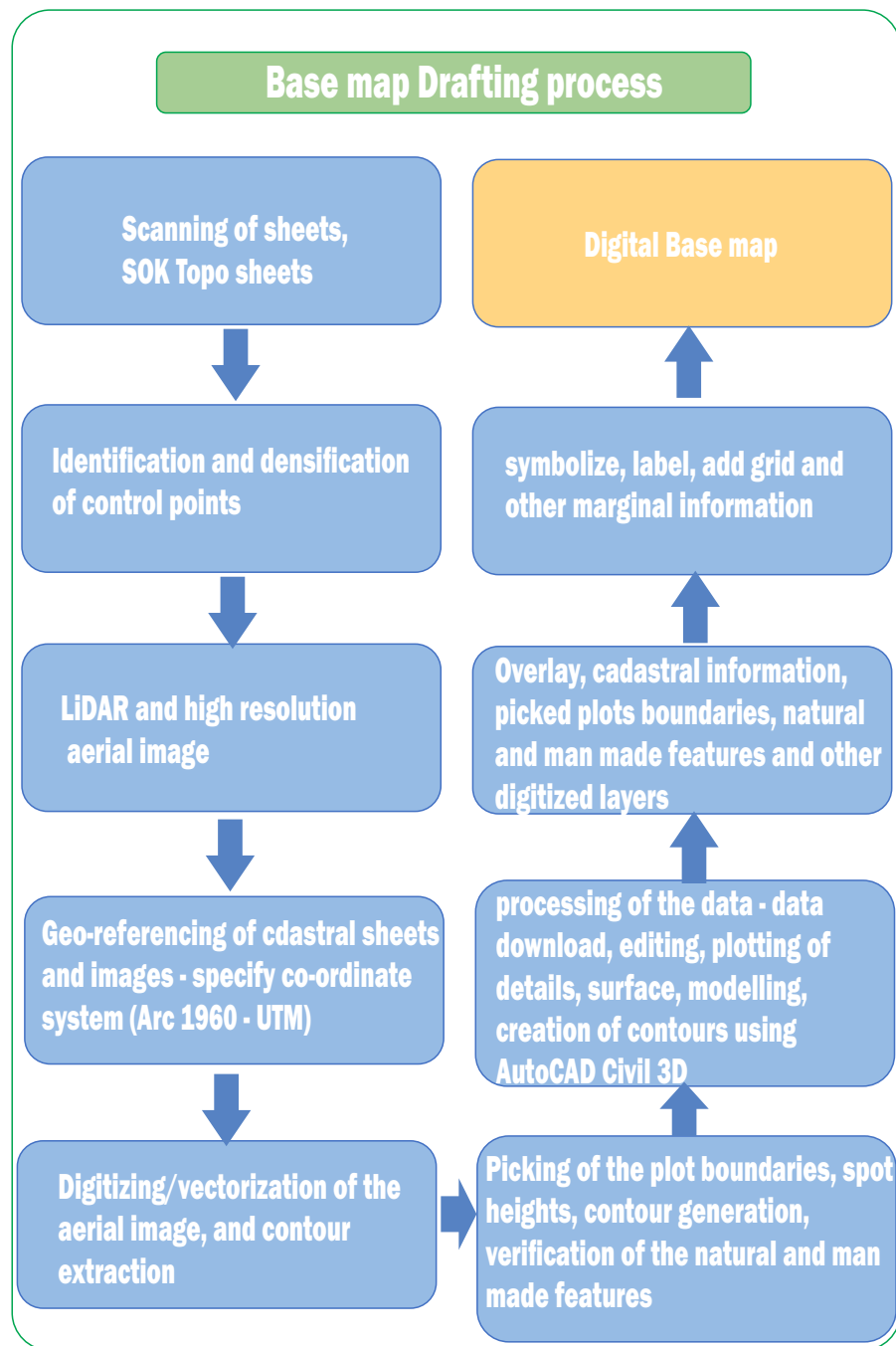
DEVELOPMENT APPLICATION General change of user procedure



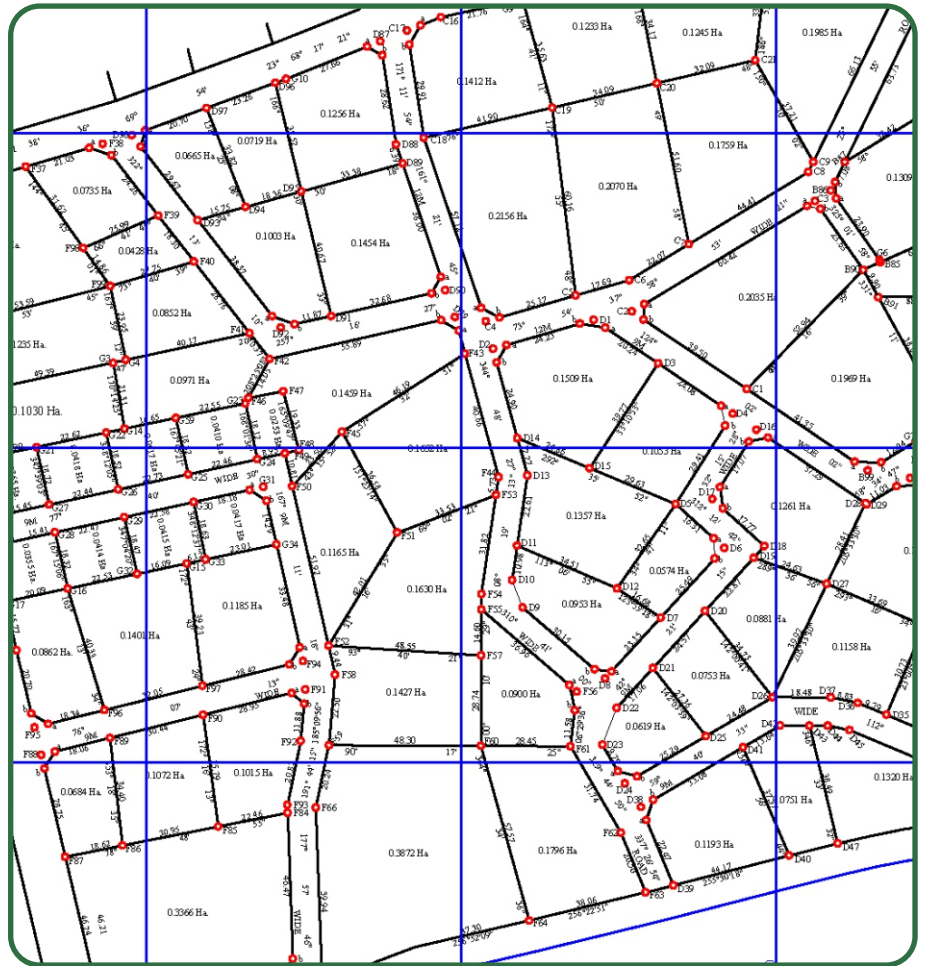
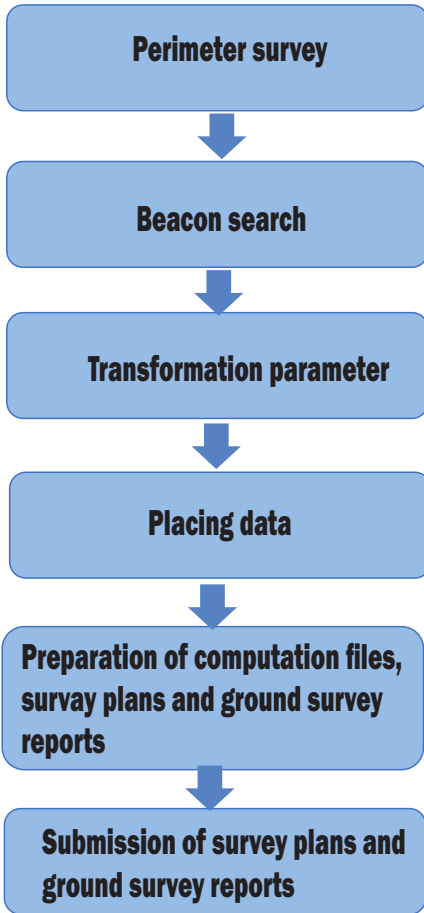
Our SERVICES

2. Digital Topographical Mapping/Survey

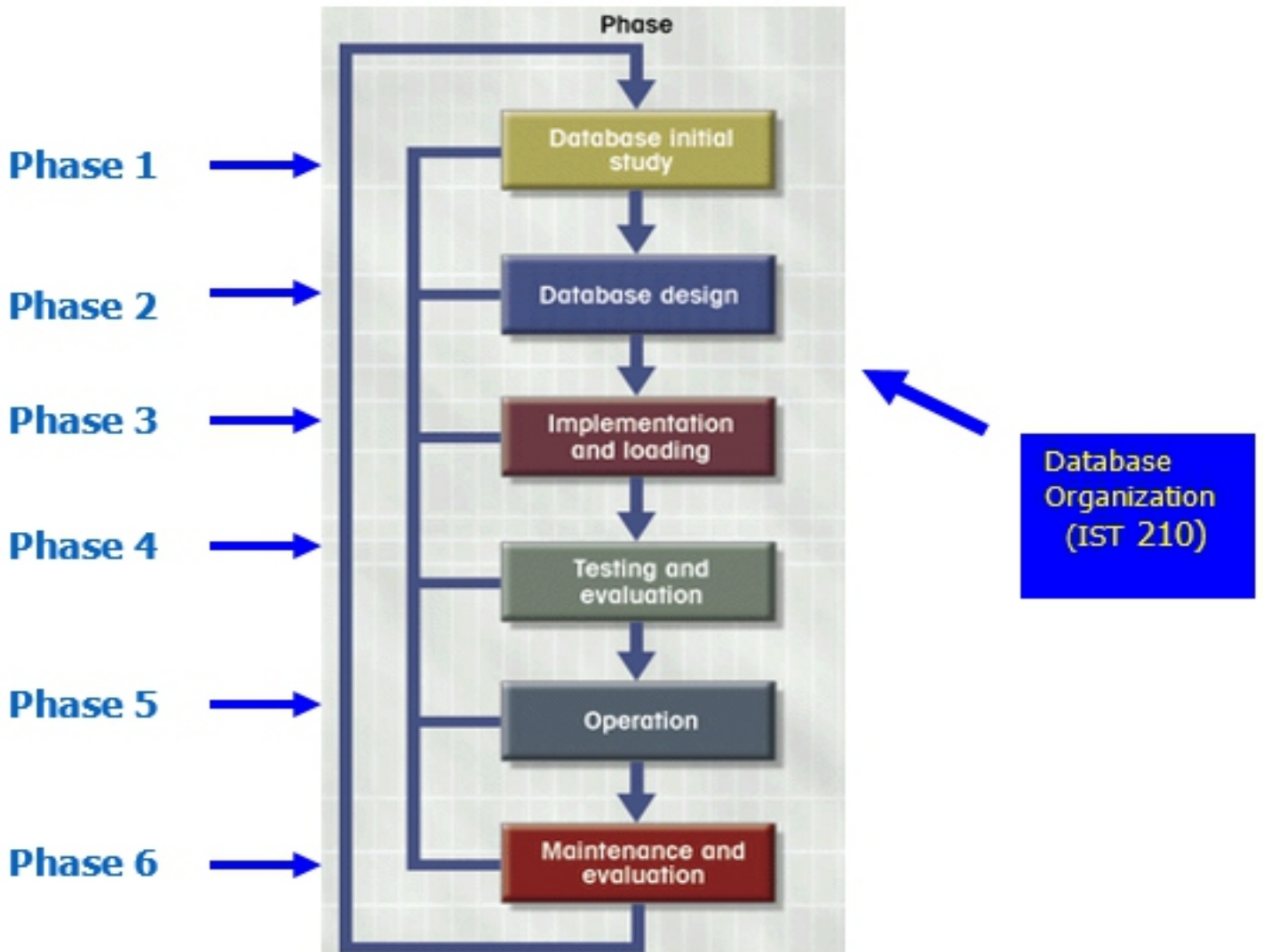
We undertake topographical survey, Digital Topographical Mapping, cadastral survey and survey of fixed boundaries etc. Generally, this entails identification and mapping of natural features (rivers, valleys, mountains, hills etc), infrastructure and other man-made features and digitizing of the existing cadastral data to prepare a base map which forms the basis for the formulation of the plan proposals. Beaconing, preparation of survey plans, processing of Lease Certificates and Title Deeds is also undertaken within this department.



Cadastral survey phase flow chart



Land Information system

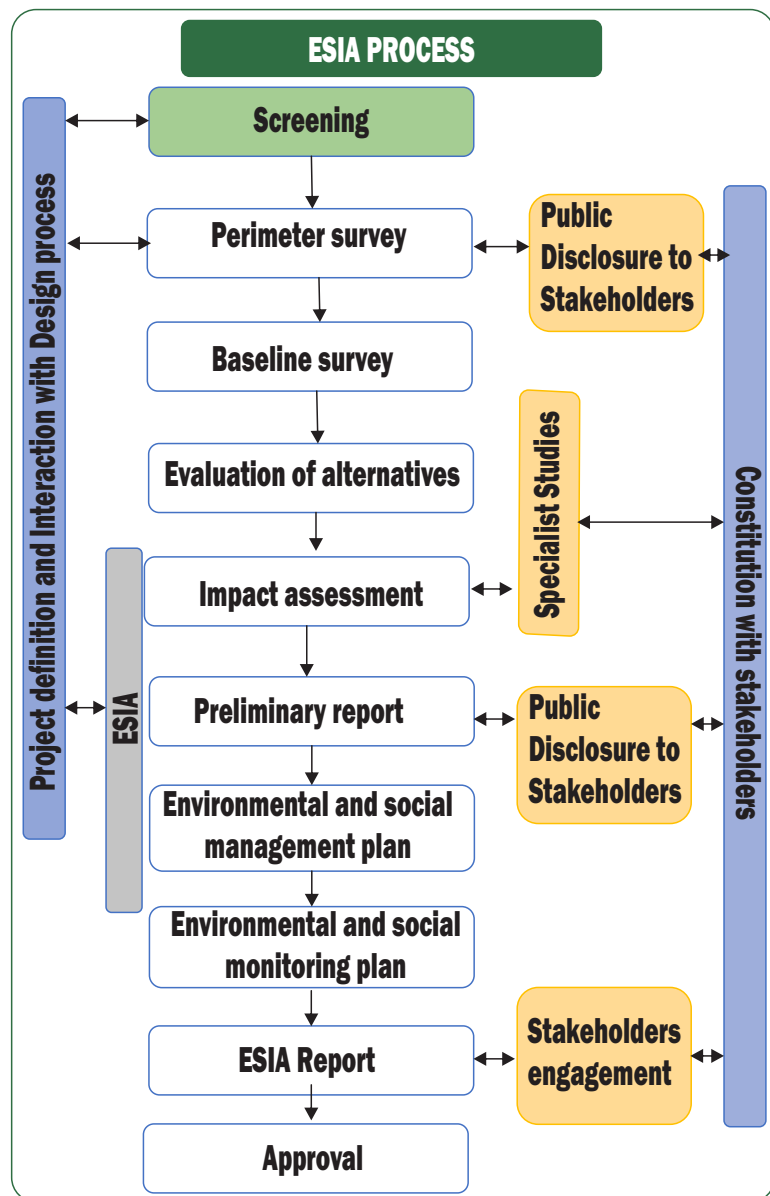
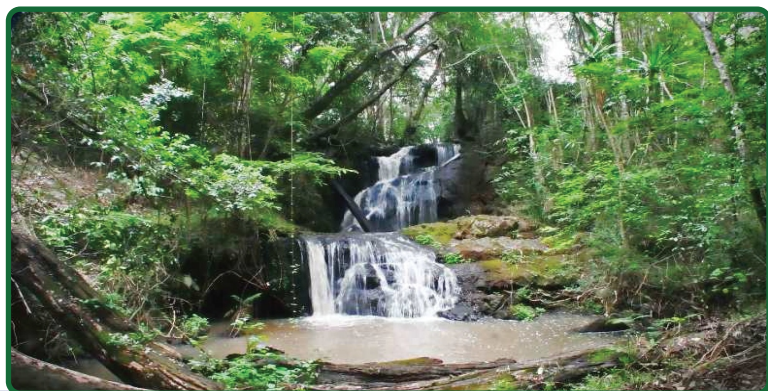


OUR SERVICES

3. Environmental Management

Renaissance Planning Ltd has a team of experts registered with Environmental Institute of Kenya (EIK) and NEMA. It is a mandatory procedure under the Environmental Management and Coordination Act (EMCA) 1999 (amended 2015) for developers to compile an Environmental Statement (ES) describing the likely significant effects of developments on the environment and propose mitigation measures.

This enables environmental factors to be given due weight, alongside economic and social factors when development projects are being considered. We undertake Environmental and Social Impact Assessment (ESIA), Strategic Environmental Assessment (SEA), Environmental Impact Assessment (EIA) and Environmental Audit (EA) for our clients, which helps to promote a sustainable pattern of physical development with minimal environmental concerns.



Equipment and Resources

Instrument/Equipment	No.	Tasks
1. Dual Frequency Geodetic Multi Constellation GNSS Receiver enabled for Static & RTK function	4	<ul style="list-style-type: none"> - To carry out control survey - To carry out the topographic surveys - To undertake Cadastral survey (placing of ground boundary mark)
2. Hand held GPS/Mobile Mappers	10	-
3. Computers (Desktops & Laptops)	12	<ul style="list-style-type: none"> - Data entry - Data compilation - Data base programming
4. Server unit	1	<ul style="list-style-type: none"> - Data base management - Data backup
5. Software <ul style="list-style-type: none"> ❖ Arc GIS- multiple user licenses ❖ AUTOCAD Civil 3D 	3	<ul style="list-style-type: none"> - Data manipulation processing and presentation - Subdivision
	3	
6. HP- Plotter (A0)	1	- Data presentation
7. Digital cameras <ul style="list-style-type: none"> ❖ Sony Video Camera ❖ Sony Cyber shot 	3	- Photography
	3	
8. Printers and scanners <ul style="list-style-type: none"> ❖ EPSON Printer and scanner 	4	<ul style="list-style-type: none"> - Printing of reports - Scanning documents
9. TOPCON GR3	2	- DGPS/ RTK Receivers for electronic data collection
10. GEOMAX Zenith 15	2	
11. LEICA 1230 GG	2	
12. LEICA Smart rover	2	
13. LEICA TCA1102 PLUS Total Station	2	<ul style="list-style-type: none"> - Control/Detail survey - Ground Trothing
14. LEICA TCR 805 Total Station	2	
15. Vehicles	7	- Transport logistics



Our **APPROACH**

Our Unique approach

Spatial Planning:

Urban, Rural and Regional Planning, GIS based Integrated Strategic Planning, Zoning/Advisory Planning, Subject (sector) Planning and preparation of Urban renewal/redevelopment plans.

Preparation and processing of Development Applications:

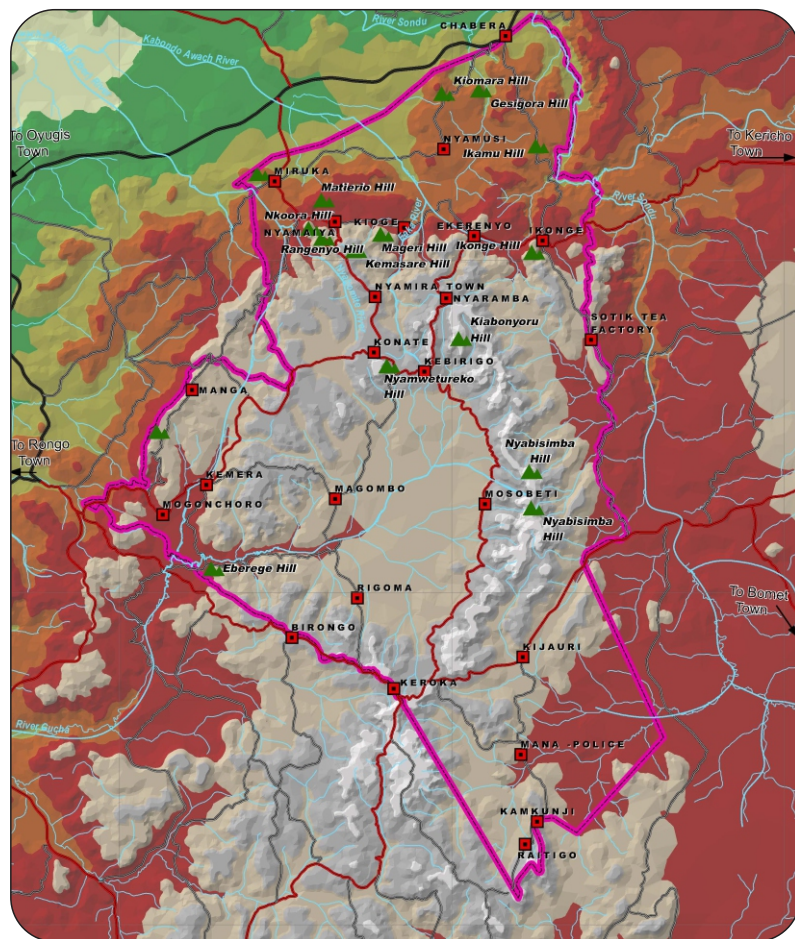
Site/Institutional/Master Planning, Land Sub-division, Change of User, Extension of User, Processing of ownership documents (lease certificates and title deeds), Renewal and Extension of Leases, and Advertisements.

Environmental Management:

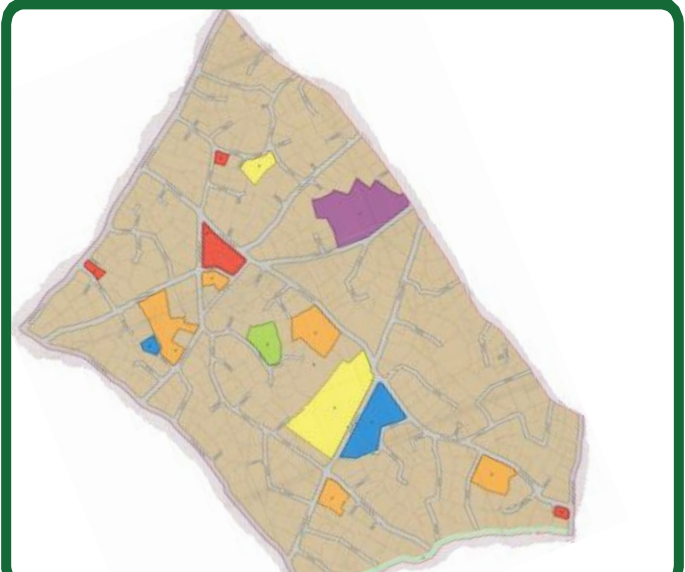
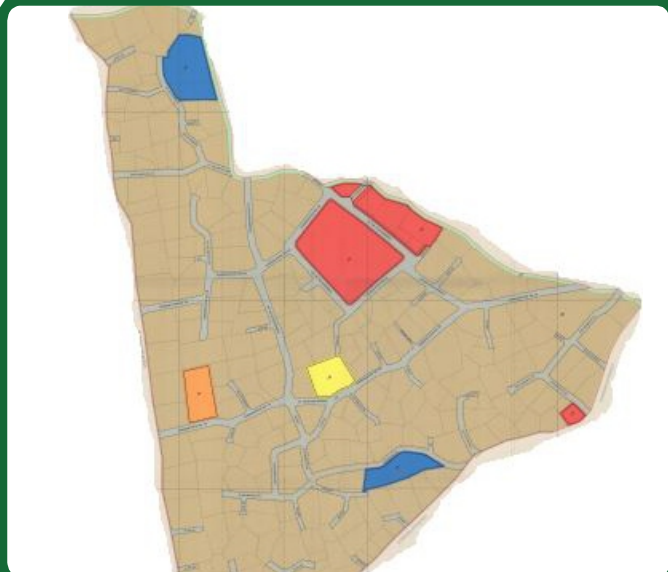
Environmental Impact Assessment (EIA), Environmental Audit (EA), Environmental and Social Impact Assessment (ESIA), and Strategic Environmental Assessment (SEA).

Digital Topographical mapping/Survey

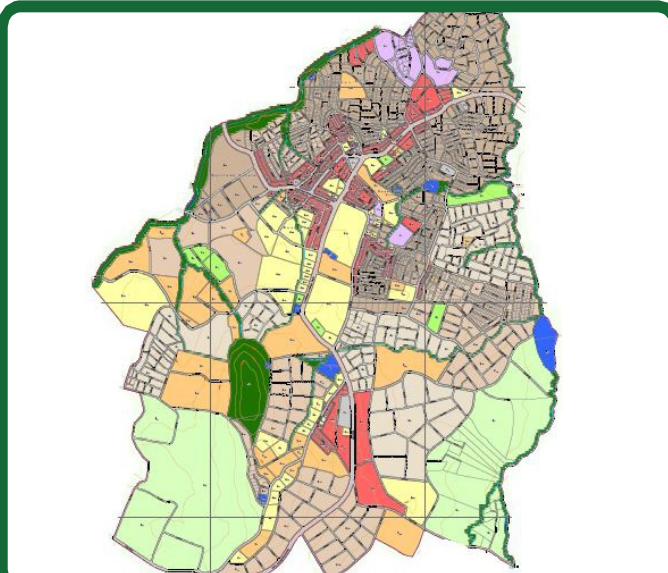
Digital Topographical Mapping of natural and man-made features (which aid in the planning process, demarcation of plots /land parcels and preparation of survey plans.



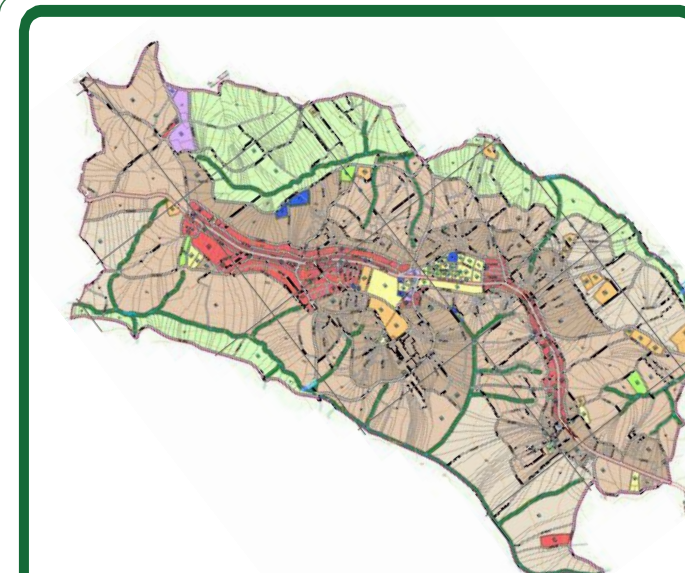
Our PORTFOLIO



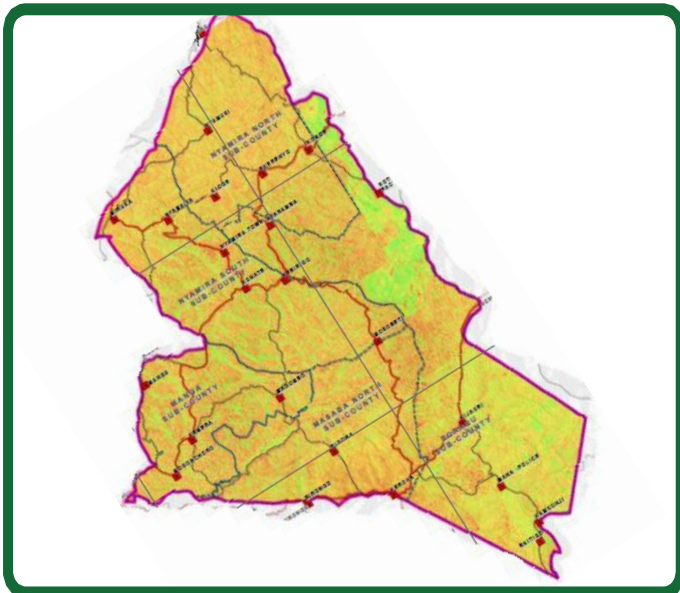
**Planning and surveying of selected informal settlements
County: Garissa**



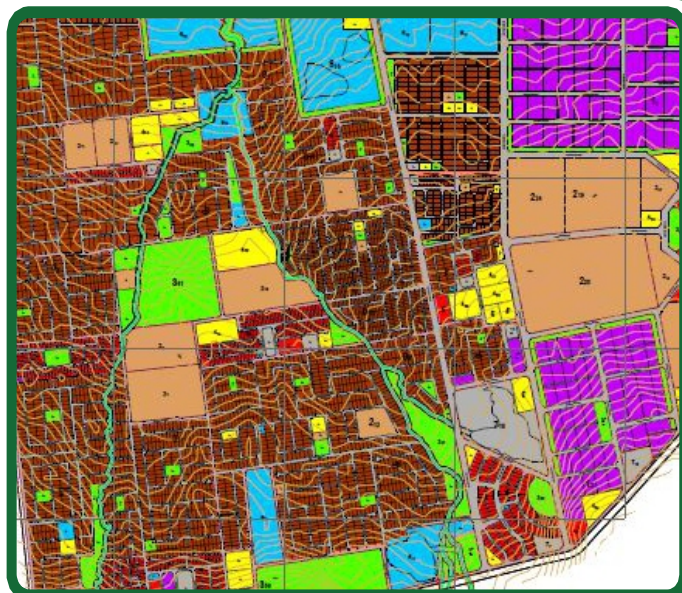
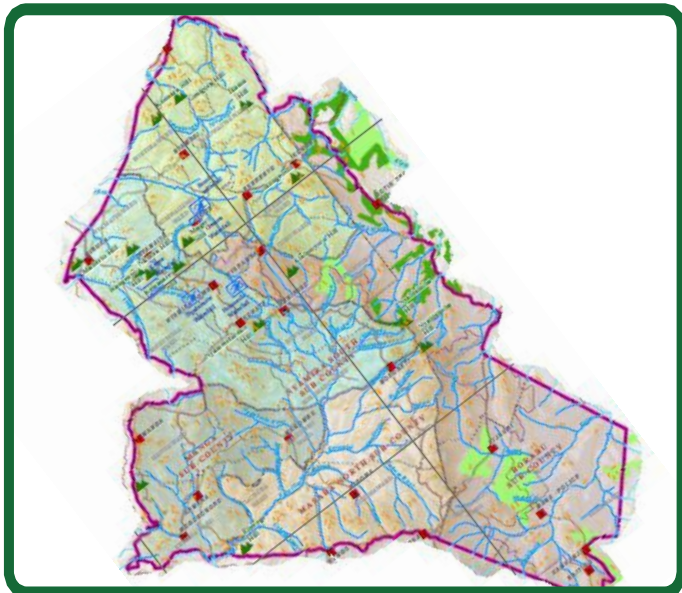
**Wote Township Local Physical and
Land Use Development Plan
County: Makueni**



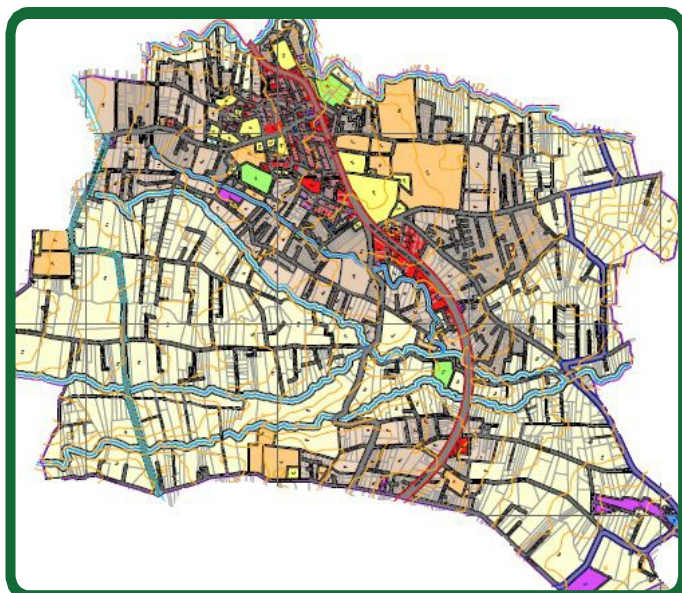
**Nyamira Township Local Physical and
Land Use Development Plan
County: Nyamira**



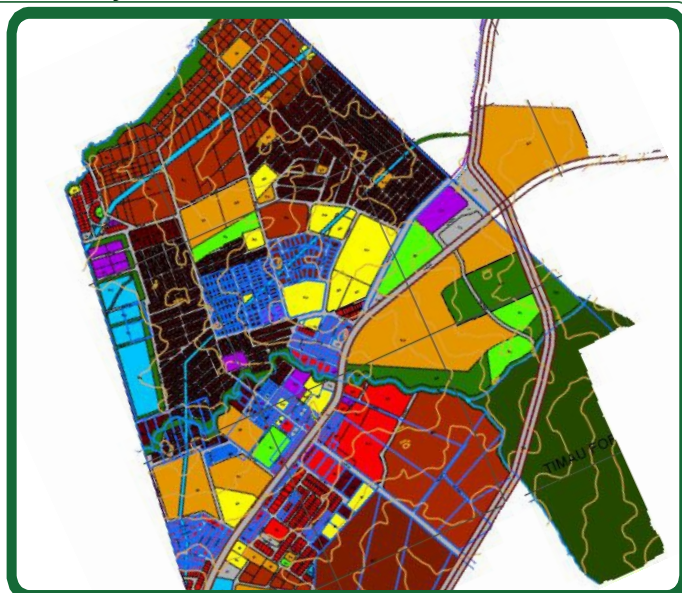
Nyamira County Spatial Plan Situational Analysis (NORMALIZED DIFFERENCE VEGETATION INDEX (NDVI) and Natural Resources Maps) County: Nyamira



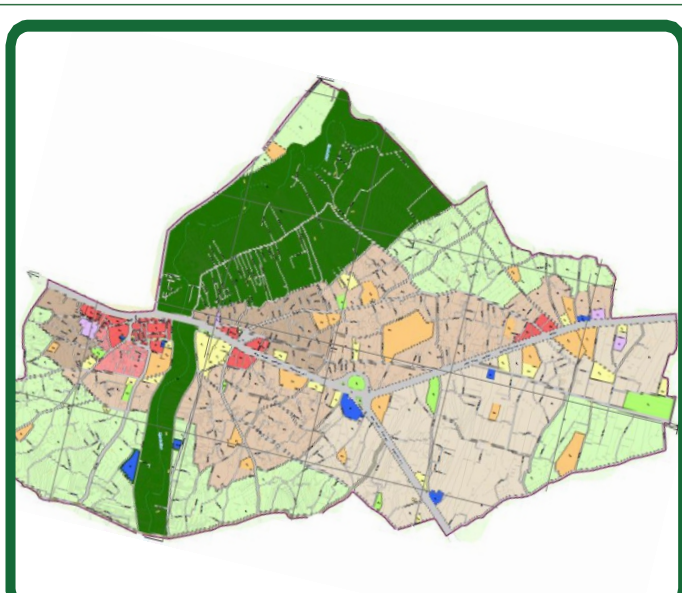
Nturingwi "A" Township Local Physical Development Plan
County: Meru



Nkubu Integrated Strategic Urban Development Plan
County: Meru

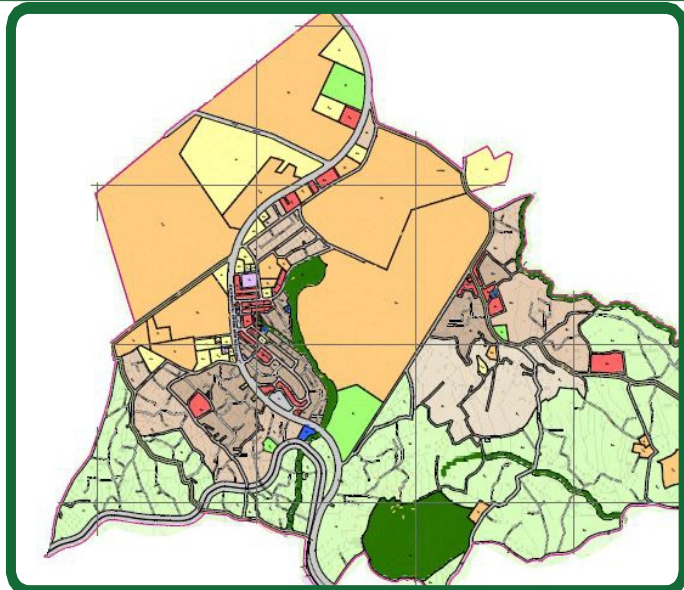


Timau Township and its environs Integrated Strategic Urban Development Plan
County: Meru

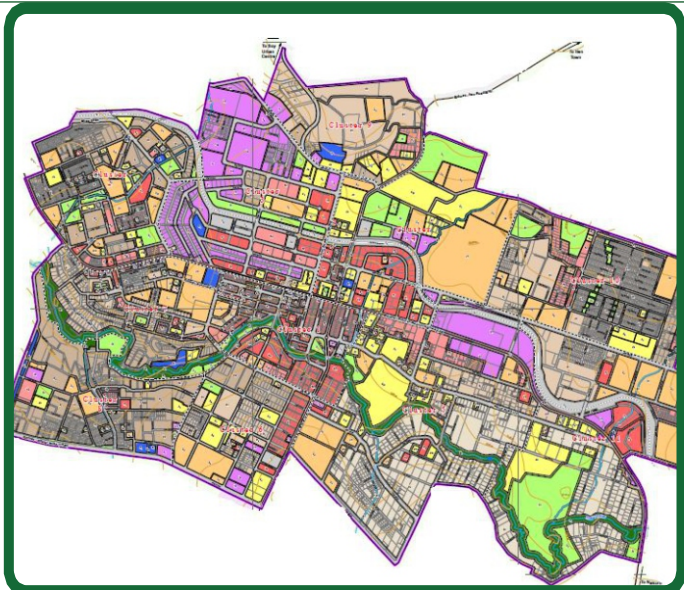


Ahero Township and its environs Integrated Strategic Urban Development Plan
County: Kisumu

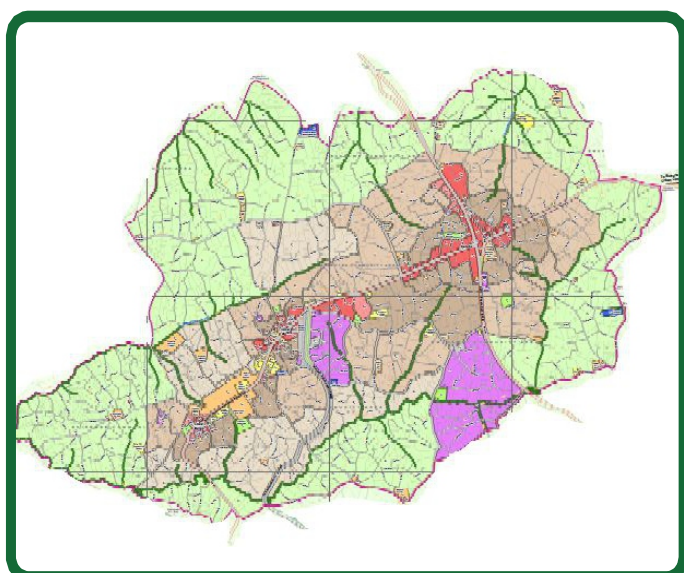
Our PORTFOLIO



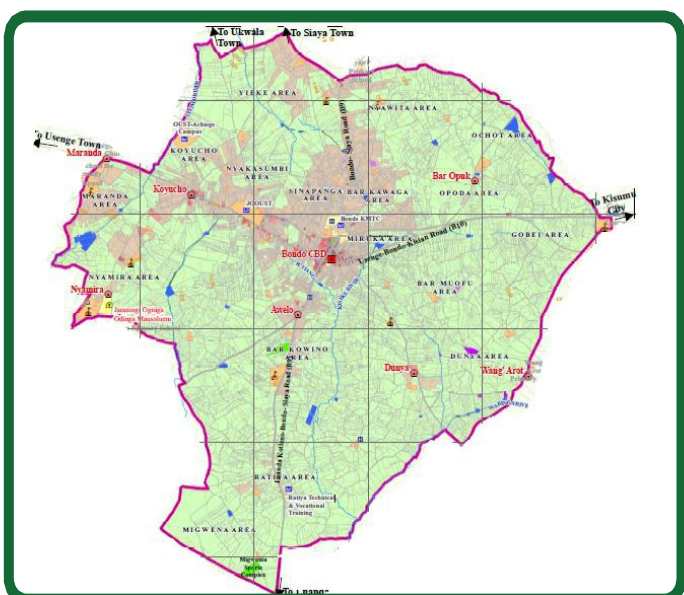
Maseno Township and its environs Integrated Strategic Urban Development Plan
County: Kisumu



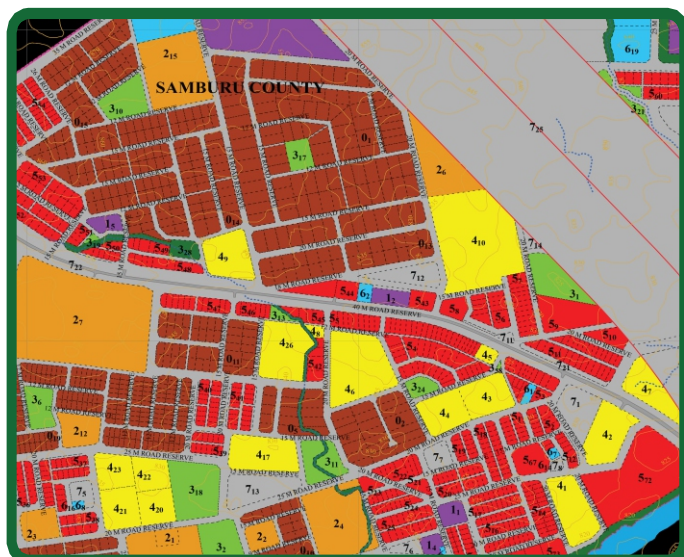
Eldoret CBD Regeneration Local Physical and Land Use Development plan
County: Uasin Gishu



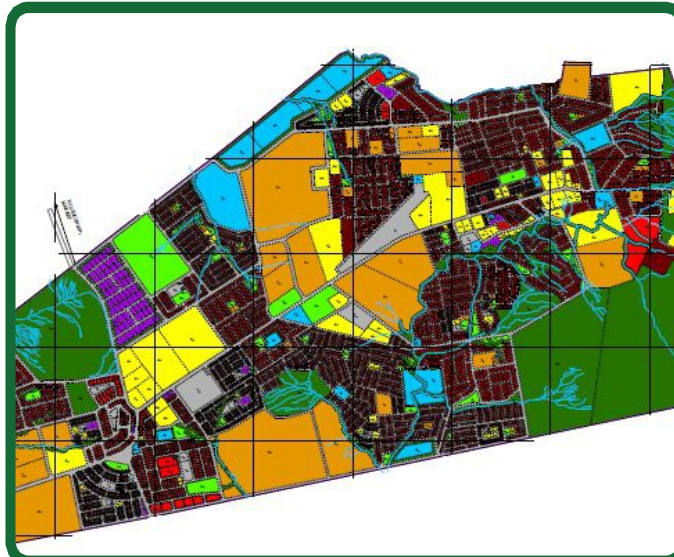
Butere Township Local Physical and Land Use Development plan
County: Kakamega



Bondo Town and its environs Existing land use
County: Siaya



Archers Post Township Integrated Strategic Urban Development Plan
County: Samburu

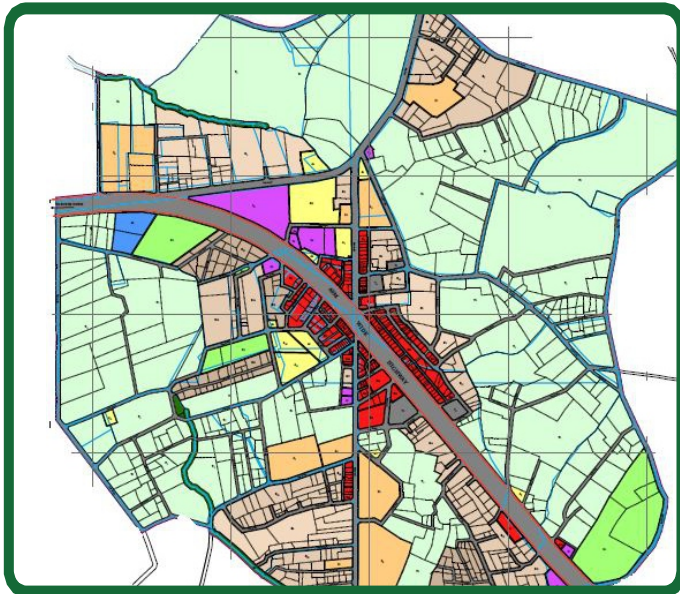


Wamba Township Local Physical Development Plan
County: Samburu

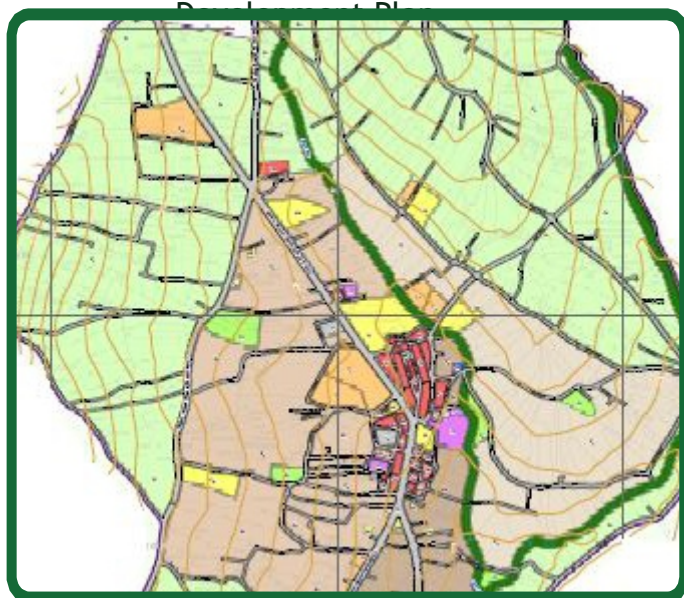
Our PORTFOLIO



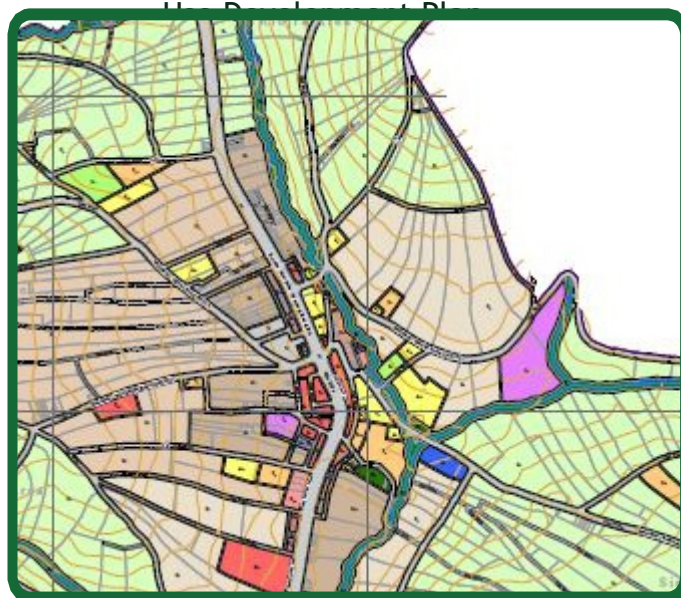
Machakos New Town local Physical Development Plan



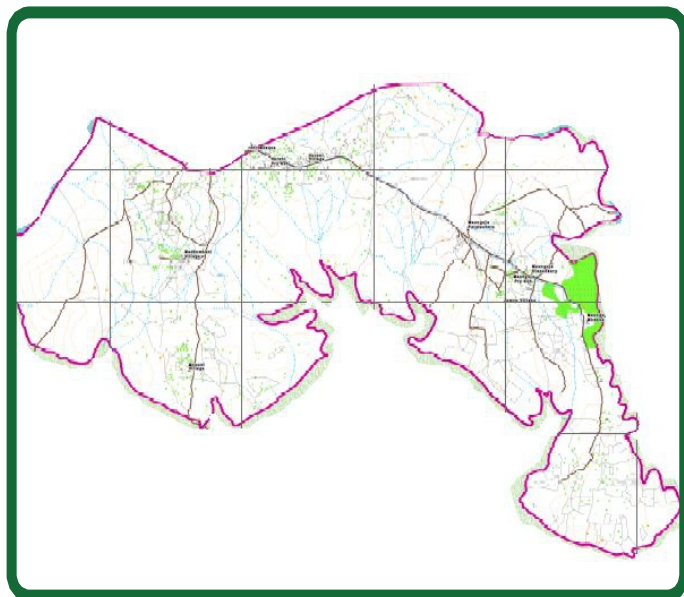
Chebole Township local Physical and Land Use Development Plan



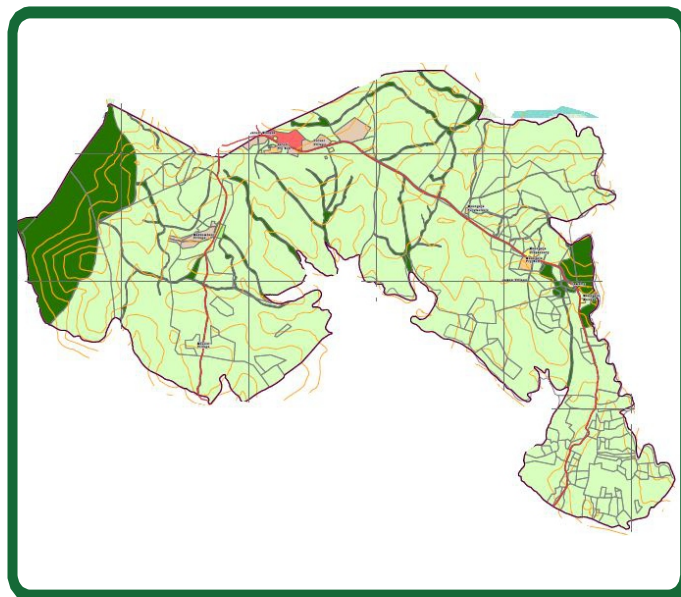
Marani Market Centre Local Physical Development Plan
County: Kisii



Masimba Market Centre Local Physical Development Plan
County: Kisii



Proposed Maunguja Knowledge City Base Map
County: Mombasa



Proposed Maunguja Knowledge City Existing Land Use
County: Mombasa

Master Plans



Consultant



Registered Head Office
KTDA Plaza, 7th Floor, Moi Avenue
P.O. Box 2315 - 00200, Nairobi,
Tel: 0722-333-967 / 0727-275-123
Email: replanningtd@gmail.com
Website: www.renaissanceplanning.co.ke

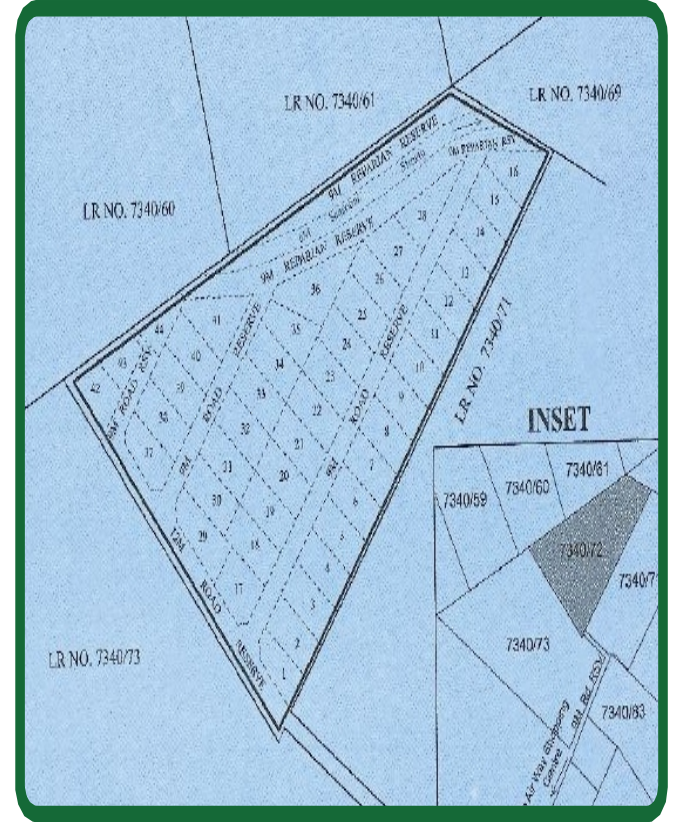
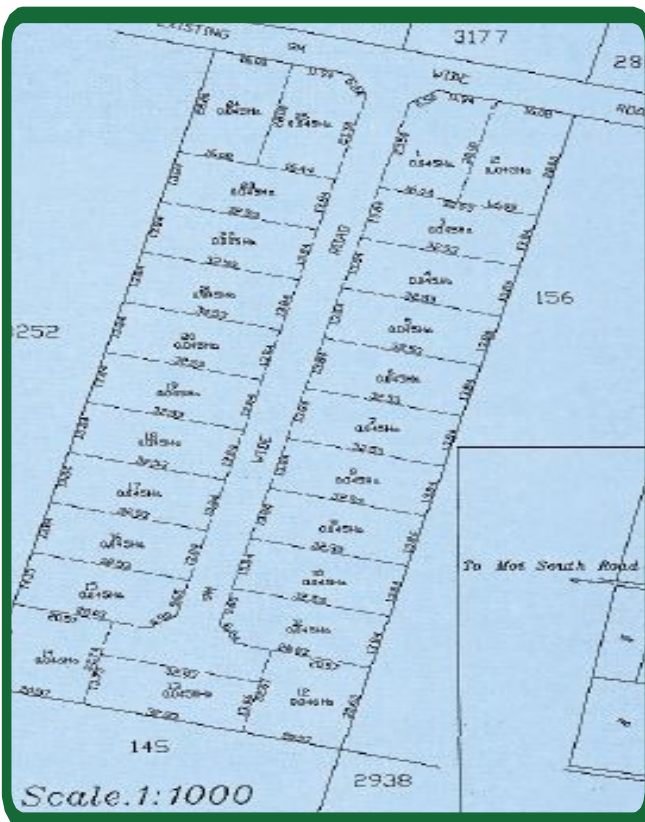
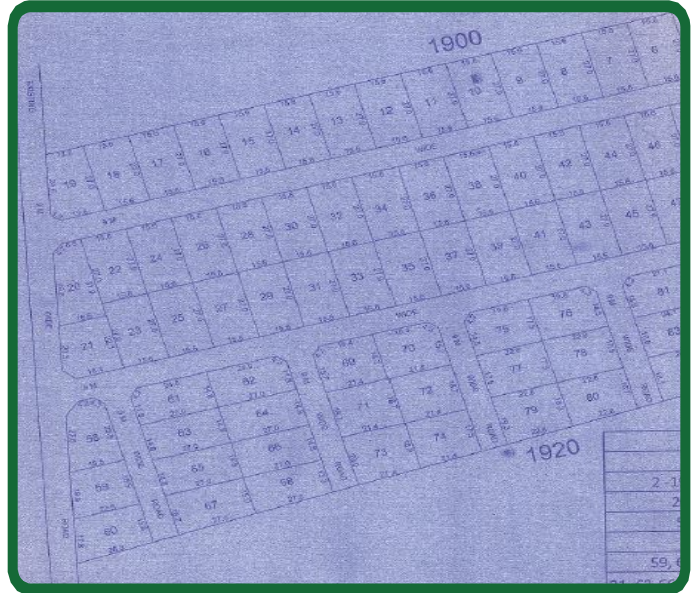
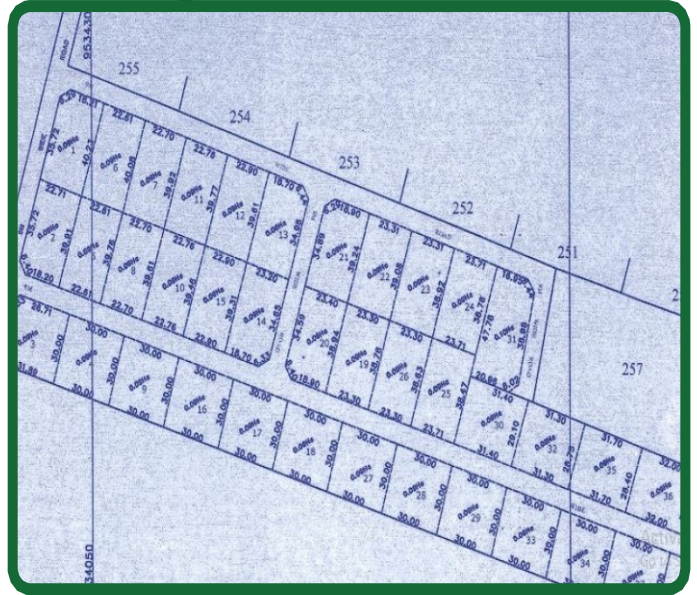
RIPIARIAN LANDS CONSERVATION & MANAGEMENT POLICY FRAMEWORK



NATIONAL LAND COMMISSION

**RIPIARIAN LANDS
CONSERVATION &
MANAGEMENT
POLICY FRAMEWORK**

Sub-Divisions and Change of User



SOME OF OUR PAST ASSIGNMENTS

A Spatial planning related

S. No	Assignment name	Main Project Activities	Name of Client	County of Assignment
1.	Consultancy services for Planning and Surveying of 5 No. informal settlements (Riig, Makhanu, Iskadek, County Namu) under Cluster IV (Phase II) .	This involved the following major activities Stakeholders Mapping and Community Engagement, preparation of Digital Base Maps for engineering services, Socio Economic Survey, Enumeration of Structures, compiling list of beneficiaries, Environmental and Social Impact Assessment (ESIA), preparation of Local Physical Development Plans (LPDPs), Land Surveying preparation of Resettlement Action Plans (RAPs), preparation of Land Information Systems (LIS)	Ministry of Transport, Infrastructure, Housing and Urban Development: State Department of Housing and Urban Development: Kenya Informal Settlement Improvement Project I (KISIP) (World Bank funded)	Garissa
2.	Consultancy services for Planning and Surveying of 6 No. informal settlements (Bulla Riig, Makhanu, Iskadek, County Namu & Kaango Mosquito) under Cluster III (Phase I)	This involved the following major activities Stakeholders Mapping and Community Engagement, Digital Base Map preparation, Socio Economic Survey, Preparation of the County Spatial Plan (CSP).	County Government of Nyamira	Garissa & Kitui
3.	Consultancy Services for preparation of Nyamira County Spatial Plan	This involved the following major activities Stakeholders Mapping and Community Engagement, Digital Base Maps preparation, Socio Economic Survey, preparation of Capital Investment Plan, preparation of Local Physical & Land Use Development Plans (LP&LUDPs), preparation of Municipal Spatial Plan (MSP), preparation of Municipal Integrated Development Plan (IDeP)	County Government of Nyamira	Nyamira
4.	Consultancy Services for preparation of Wote Municipal Spatial Plan (MSP) and Municipal Integrated Development Plan (IDeP) (This also involved preparation of the following plans; Local Physical & Land Use Development Plans for Wote Townships: Kathonzweni, Mkuyuni, Kalamba Kilala, Nziu and Mbuvo Market Centres)	This involved the following major activities Stakeholders Mapping and Community Engagement, Digital Base Maps preparation, Socio Economic Survey, preparation of Capital Investment Plan, preparation of Local Physical & Land Use Development Plans (LP&LUDPs), preparation of Municipal Spatial Plan (MSP), preparation of Municipal Integrated Development Plan (IDeP)	Government of Makueni County	Makueni
5.	Consultancy Services for preparation of Nyamira Municipality Spatial Plan (MSP) - (This also involved preparation of Local Physical & Land Use Development Plans for Nyamira Township, Kebirigo, Nyaramb, Nyamaiya, Miruka, Sironga, Ting Konate and Kioge Market Centres)	This involved the following major activities Stakeholders Mapping and Community Engagement, Digital Base Maps preparation, Socio Economic Survey, preparation of Capital Investment Plan, preparation of Local Physical & Land Use Development Plans (LP&LUDPs), preparation of Municipal Spatial Plan (MSP)	County Government of Nyamira	Nyamira
6.	Consultancy Services for Digital Topographical Mapping, Surveying and preparation of Integrated Strategic Urban Development Plan (ISUDP) for Nturingwi "A" Township	This involved the following major activities Stakeholders Mapping and Community Engagement, preparation of Digital Base Maps, Socio	County Government of Meru	Meru

Our PORTFOLIO

S. No	Assignment name	Main Project Activities	Name of Client	County of Assignment
7.	Consultancy Services for preparation of Digital Topographical Mapping, Surveying and Integrated Strategic Urban Development (ISUDP) for Nkubu Township and its Environs Meru County, Kenya. The project also involved preparation of Local Physical Development Plan for Nkubu Township, Kariene, Mwachia, Kanyakine, Mujwa, Ukuu, Nthira, Kamachegon & Mikumbune Market Centers.			
8.	Consultancy Services for Digital Topographical Mapping, Surveying and preparation of Integrated Strategic Urban Development Plan for Timau Township and its Environs in Meru County, Kenya. The project also involved preparation of Local Physical Development Plan for Timau Township, Kithithina, Mia Mwaritani, Kwa Ng'ang'a and Ngusishi Market Centre			
10	Consultancy Services for Digital Topographical Mapping and preparation of Integrated Strategic Urban Development Plan for Ahero Town & its environs It also involved preparation of Local Physical & Land Use Development Plans for Ahero Township and Korowero Market Centre			
11	Consultancy Services for Digital Topographical Mapping and preparation of Integrated Strategic Urban Development Plan for Maseno Town & its environs [It also involved preparation of Local Physical & Land Use Development Plans for Maseno Township, Chulaimbo, Lela Daraja Mbili Market Centres.			
12	Consultancy services for preparation of Local Physical and Land Use Development Plan for Kaplolo, Kipsangui and Ngeria Trading Centres			
13	Consultancy services for preparation of Local Physical and Land Use Development Plan for Tuiyo, Kipsigak and Garage Trading Centres			
14	Consultancy Services for Digital Topographical Mapping and preparation of Local Physical and Land Use Development Plan for Chebunyo Town			
15	Consultancy Services for Digital Topographical Mapping and preparation of Local Physical and Land Use Development Plan for Chebole Town			
16	Consultancy Services for Digital Topographical Mapping and preparation of Integrated Local Physical Development Plan for Marani Township			
17	Consultancy Services for Digital Topographical Mapping and preparation of Integrated Local Physical Development Plan for Masimba Township			
18	Consultancy Services for Digital Topographical Mapping and preparation of Integrated Local Physical Development Plan for Nyamaramba Township			
19	Consultancy Services for Digital Topographical Mapping and preparation of Integrated Local Physical Development Plan for Mosocho Township			

This involved the following major activities: Stakeholders Mapping and Community Engagement, preparation of Digital Base Maps, SocioEconomic Survey, preparation of Capital Investment Plan, preparation of Local Physical Development Plans (LP& LUDPs)

Our PORTFOLIO

S. No	Assignment name	Main Project Activities	Name of Client	County of Assignment
20	Consultancy Services for Digital Topographic Mapping and preparation of an Integrated Local Physical Development Plan for Archers Post		County Government of Samburu	Samburu
21	Consultancy Services for Digital Topographic Mapping and preparation of Local Physical Development Plan for Wamba Township			
22	Consultancy Services for preparation of Digital Topographical Mapping and a Local Physical Development Plan for Machakos New Town		GIBB Architects Ltd	Machakos
23	Consultancy Services for Digital Topographic Mapping, Planning and Surveying of Sega Market Centre		County Government of Siaya	Siaya
24	Consultancy Services for Digital Topographic Mapping, Planning and Surveying of Nyamonye Market Centre			
25	Consultancy Services for Digital Topographic Mapping, Planning and Surveying of Boro Market Centre			
26	Consultancy Services for Preparation Integrated Local Physical Development Plan for Butere Town		County Government of Kakamega	Kakamega
27	Consultancy Services for Preparation of Eldoret CBD Regeneration Physical and Land Use Development Plan		County Government of Uasin Gishu	Uasin Gishu
28	Consultancy Services for Preparation of Local Physical and Land Use Development Plan for Knowledge City in Mwakirunge		County Government of Mombasa	Mombasa
29	Consultancy Services for Preparation of Local Physical and Land Use Development Plan for Bondo Town	County Government of Siaya	Siaya	
30	Consultancy Services for Developing Participatory Forest Management Plans for Nchura, Kuani and Maitei Hills	This involved the following major activities Stakeholders Mapping and Community Engagement, Socio economic and environmental survey, preparation of Policy report, preparation of Participatory Forest Management Plans	County Government of Meru	Meru
31	Consultancy Services for Development of a Policy Framework on Riparian Land Management in Kenya.	This involved the following major activities Stakeholders Mapping and Community Engagement, Socio economic and environmental survey, preparation of Participatory Riparian Management Plan, preparation of Policy Framework on Riparian Land Management Report	National Land Commission (NLC)	Countrywide

SOME OF OUR PAST ASSIGNMENTS

B Change of User and Sub-division

SOME OF THE SUBDIVISION AND CHANGE OF USER PROJECTS UNDERTAKEN INCLUDE:

1. LAMU/ L. KENYATTA 1/4600 - Lamu County
2. LAMU/L. KENYATTA 1/4711 - Lamu County
3. LAMU/ L. KENYATTA 1/5673 - Lamu County
4. Kwale/ Tiwi Beach Block / 258 Kwale County
5. Parcel No. Ruiru / Ruiru. East Block 3/2036 - Kiambu County
6. L.R No. Nanyuki Municipality 4/186 - Nyandarua County
7. Kericho/ Block 5/784 - Kericho Municipality - Kericho County
8. Nairobi/Block 150/27 - Nairobi City County
9. L.R No. Nairobi/ Block 139/836- Roysambu Sub-County-Nairobi County
- 10.Parcel No. Abothuguchi / Ruiru/ 1749 SHT-15 - Meru County
- 11.Parcel No. Abothuguchi/ Makandune / 1413 - Meru County
- 12.Parcel No. Kibirichia /Kibirichia / 861 - Meru County
- 13.Naivasha / Maraigushu Block 9 / 132 - Nakuru County
- 14.Meru Municipality Block 11/1 - Meru County
- 15.L.R No.6870 Plan No. 28266- Kiambu County
- 16.Nanyuki/ Marura Block 2 - Nyahururu County
- 17.L.R No. 12715/ 11029 - Mavoko, Machakos County
- 18.L.R No. 12715/ 11030- Mavoko, Machakos County
- 19.Dagoretti/ Kangemi / 1190 - Nairobi City County
- 20.L.R No. 27206 /3 Maili Tisa - Uasin Gishu County
- 21.Naivasha / Maraigushu Block 9/3263 Nakuru County
- 22.L.R No. 32779 - Stoni Athi Mavoko, Machakos County
- 23.Nyandarua / Ndemi / 931 - Nyandarua County

SOME OF OUR PAST ASSIGNMENTS

C Environmental Management

No.	Assignment Name	Client	County
1.	Environmental and Social Impact Assessment Study for the Construction of Administration Block Offices, Boundary Wall and Access Road for Naivasha Special Economic Zone at Naivasha	Special Economic Zones Authority (SEZA)	Nakuru
2.	Environmental and Social Impact Study for Olulunga – Mukenyu/Narok Bypass Road Project	Kenya Rural Road Authority (KeRRA)	Narok
3.	Environmental and Social Impact Assessment Study for Kilgoris – Shartuka – Soiti – Murkan – Emurua Road Project	KeRRA	Narok
4.	Environmental and Social Impact Assessment Study for Mulot – Sogoo – Tendet & Sogoo Hills Road Project	KeRRA	Narok
5.	Environmental and Social Impact Assessment Study for Muigai Inn- Ichaweri-Gatundu -Kang’oo road project	KeRRA	Kiambu
6.	Environmental and Social Impact Assessment Study for Kibichoi-Ichaweri-Nembu-Gachika Road Project	KeRRA	Kiambu
7.	Environmental and Social Impact Assessment Study for the Proposed Kithimu Market Improvement Project	Ministry of Agriculture, Livestock & Fisheries; State Department of Agriculture [Smallholder Horticulture Market Programme (SHoMaP)]	Embu
8.	Environmental and Social Impact Assessment Study for the Proposed Construction of Maara Horticulture Market	Ministry of Agriculture, Livestock & Fisheries; State Department of Agriculture [SHoMAP]	Tharaka Nithi
9.	Environmental and Social Impact Assessment Study for the Proposed Construction of Karaene – Muuti Bridge	Ministry of Agriculture, Livestock & Fisheries; State Department of Agriculture [SHoMAP]	Meru
10.	Environmental and Social Impact Assessment Study for the Kiorone Road	Ministry of Agriculture, Livestock & Fisheries; State Department of Agriculture [SHoMAP]	Meru
11.	Environmental and Social Impact Assessment Study for A3 Broadway-Kiandutu-Athena-EngenKiganjo-Muthaiga Road	KeRRA	Kiambu
12.	Environmental and Social Impact Assessment Study for Courtesy Beach Loop Road	KeRRA	Kiambu
13.	Environmental and Social Impact Assessment Study for Ruaka-Banana-Limuru-& Ngecha Road Project	KeRRA	Kiambu
14.	Environmental and Social Impact Assessment Study for Thogoto-Gikambura-Mutarakwa- (Phase III) Road Project	KeRRA	Kiambu
15.	Environmental and Social Impact Assessment Study of Mariakani-Bamba and Kilifi-Kiwandani roads improvement project	KeRRA	Kilifi
16.	Environmental and Social Impact Assessment Study of Kisima - Kibirichia-Kiirua-Ruiri road improvement project	KeRRA	Meru
17.	Environmental and Social Impact Assessment Study of Kamatira-Cheptongei road improvement project	KeRRA	West Pokot
18.	Environmental and Social Impact Assessment Study of JNCT A104-Drys-Ainabkoi-Kapchorwa-Naiberi road improvement project	KeRRA	Uasin Gishu
19.	Environmental and Social Impact Assessment Study for MogotioMugurin-Lake Bogoria-Marigat road improvement project	KeRRA	Baringo
20.	Environmental and Social Impact Assessment Study for Upgrading to Bitumen Standard of JNCT A2 Kwa Mumbero – Kithithina Primary – JNCT A2 Mia Moja/JNCT A2 Timau – Rugirando – Ngusishi JNCT A2 & JNCT A2 Makutano – X Lewa – Mbuju – Ngare Dare Roads	KeRRA	Meru
21.	Environmental and Social Impact Assessment Study for Upgrading to Bitumen Standard and Maintenance of Chiakariga – Marimanti – Gatunga Road	KeRRA	Tharaka Nithi

SOME OF OUR PAST ASSIGNMENTS

No.	Assignment Name	Client	County
22	Environmental and Social Impact Assessment Study for Upgrading to Bitumen Standard and Maintenance of Chogoria – Weru – Marima - Kiriani Road	KeRRA	Tharaka Nithi
23	Environmental and Social Impact Assessment Study for Upgrading to Bitumen Standard and Maintenance of Gatukuyu – Mataara Road	KeRRA	Kiambu
24	Environmental and Social Impact Assessment Study for Upgrading to Bitumen Standard and Maintenance of Gatundu – Mukinye – Juja, Gatundu – Gitati Ini – Karinga & Gatundu – Ituro – Kagumoini – Karinga Roads	KeRRA	Kiambu
25	Environmental Audit (EA) Study of Mariakani – Bamba & Kilifi – Kiwandani Road Project	KeRRA	Kilifi
26	Environmental Audit Study of Daraja Sita – Dikirr – Chebole – Labotiet Road Project	KeRRA	Bomet
27	Environmental and Social Impact Assessment Study for Upgrading to Bitumen Standard of Kerwa – Acre Tano/Access to Kerwa Police & Kerwa Primary School/Chege Mbitiru – Kiroe/Gikira – Mindo/Catholic – Nduma/JNCT B32 Ha - Koinange (Gitutha) – Nguirubi Secondary – Kiawanda Primary – Rwacumari Primary – Ndiuni – Ngubi/Rwacumari – Mungetho(Kandumo)/JNCT B32 (Plot) – Kiawanda/Gitangu – Kabocha (Kwa Henry)/Mahinga(Ndiri) – Gitangu/Gwa Gichini – Mahinga/Thamanda – Utafiti Primary School – Kari & Muguga High School – Nderi/Total (Kwambira) – Gichagi Loop Roads	KeRRA	Kiambu
28	Environmental and Social Impact Assessment Study for Upgrading to Bitumen Standard and Maintenance of Karatina – Slaughter House – Ragati – Unjiru – Ihwagi – Gaikuyu – Gitunduti – Kabiru Ini Road	KeRRA	Nyeri
29	Environmental and Social Impact Assessment Study for Upgrading to Bitumen Standard and Maintenance of Endarasha – Charity – Gakanga – Embaringo – Kimunyuru – Jnct D447 Road.	KeRRA	Nyeri
30	Environmental and Social Impact Assessment Study for Upgrading to Bitumen Standard of Kali – Kikima – Kitundu – Kuthungu – Nduluku, Kikima – Kyambalasi, Mbooni Forest – Kikima & Kikima Utangwa Township Road	KeRRA	Makueni
31	Environmental and Social Impact Assessment Study for Upgrading of Bitumen Standards and Maintenance of Ha Thiiru – Gikambura – Musa Gutau & Ha Itiyo – Green Gardens – Southern Bypass – Alliance Roads & Market Loops	KeRRA	Kiambu
32	Environmental and Social Impact Assessment Study for Upgrading of Bitumen Standards and Maintenance of Karanje Loop Roads, Access to Limuru Girls & Limuru (JNCT Equity)/Bata Loop -Murengeti Roads	KeRRA	Kiambu
33	Environmental and Social Impact Assessment Study for Upgrading of Bitumen Standards and Maintenance of JNCT A2 Membly – Northern Bypass JNCT C559 BTL – JNCT C559 Tatu City Roads.	KeRRA	Kiambu
34	Environmental and Social Impact Assessment Study for Upgrading of Bitumen Standards and Maintenance of Kamiti Corner (Rutur i) – Kamiti Anmer – Ferran Road	KeRRA	Kiambu
35	Environmental and Social Impact Assessment Study for Upgrading to Bitumen Standard of Circulation Roads Phase 1, Parking Lot and the Proposed 4 Storey Tuition Block Within Nairobi Technical Training Institute	Nairobi Technical Training Institute	Nairobi
36	Environmental and Social Impact Assessment Study for Upgrading to Bitumen Standard of Circulation Roads Phase 2 and the Proposed Hospitality Block within Nairobi Technical Institute	Nairobi Technical Training Institute	Nairobi

Our CLIENTS

<p>1 MINISTRY OF TRANSPORT, INFRASTRUCTURE, HOUSING & URBAN DEVELOPMENT</p>  	<p>Ministry of Transport, Infrastructure Housing, Urban Development and Public Works, State Department of Housing - Kenya Informal Settlement Improvement Project (KISIP), Project Location, County Government of Garissa</p>	<p>7</p> 	<p>County Government of Kakamega</p>
<p>2</p> 	<p>Ministry of Transport, Infrastructure Housing, Urban Development and Public Works, State Department of Urban Development, Kenya Urban Support Programme (KUSP) Project Location - Government of Makueni County</p>	<p>8</p> 	<p>County Government of Siaya</p>
<p>3</p> 	<p>Ministry of Transport, Infrastructure Housing, Urban Development and Public Works, State Department of Urban Development, Kenya Urban Support Programme (KUSP) Project Location - Government of Nyamira County</p>	<p>9</p> 	<p>County Government of Samburu</p>
<p>4</p> 	<p>County Government of Meru</p>	<p>10</p> 	<p>County Government of Machakos</p>
<p>5</p> 	<p>County Government of Kisumu</p>	<p>11</p> 	<p>County Government of Bomet</p>
<p>6</p> 	<p>County Government of Uasin Gishu</p>	<p>12</p> 	<p>County Government of Kisii</p>
<p>4</p> 	<p>County Government of Meru</p>	<p>13</p> 	<p>County Government of Mombasa</p>
<p>5</p> 	<p>County Government of Kisumu</p>	<p>14</p> 	<p>Kenya Rural Roads Authority (KeRRA)</p>
<p>6</p> 	<p>County Government of Uasin Gishu</p>	<p>15</p> 	<p>Special Economic Zones Authority</p>

Our CLIENTS

<p>16</p> 	<p>National Land Commission</p>
<p>17</p> 	<p>Uwezo Fund</p>
<p>18</p> 	<p>Meru National Polytechnic</p>

<p>19</p> 	<p>Meru Teachers Training College</p>
<p>20</p> 	<p>Nkabune Technical Training Institute</p>
<p>21</p> 	<p>Nairobi Technical Training Institute</p>